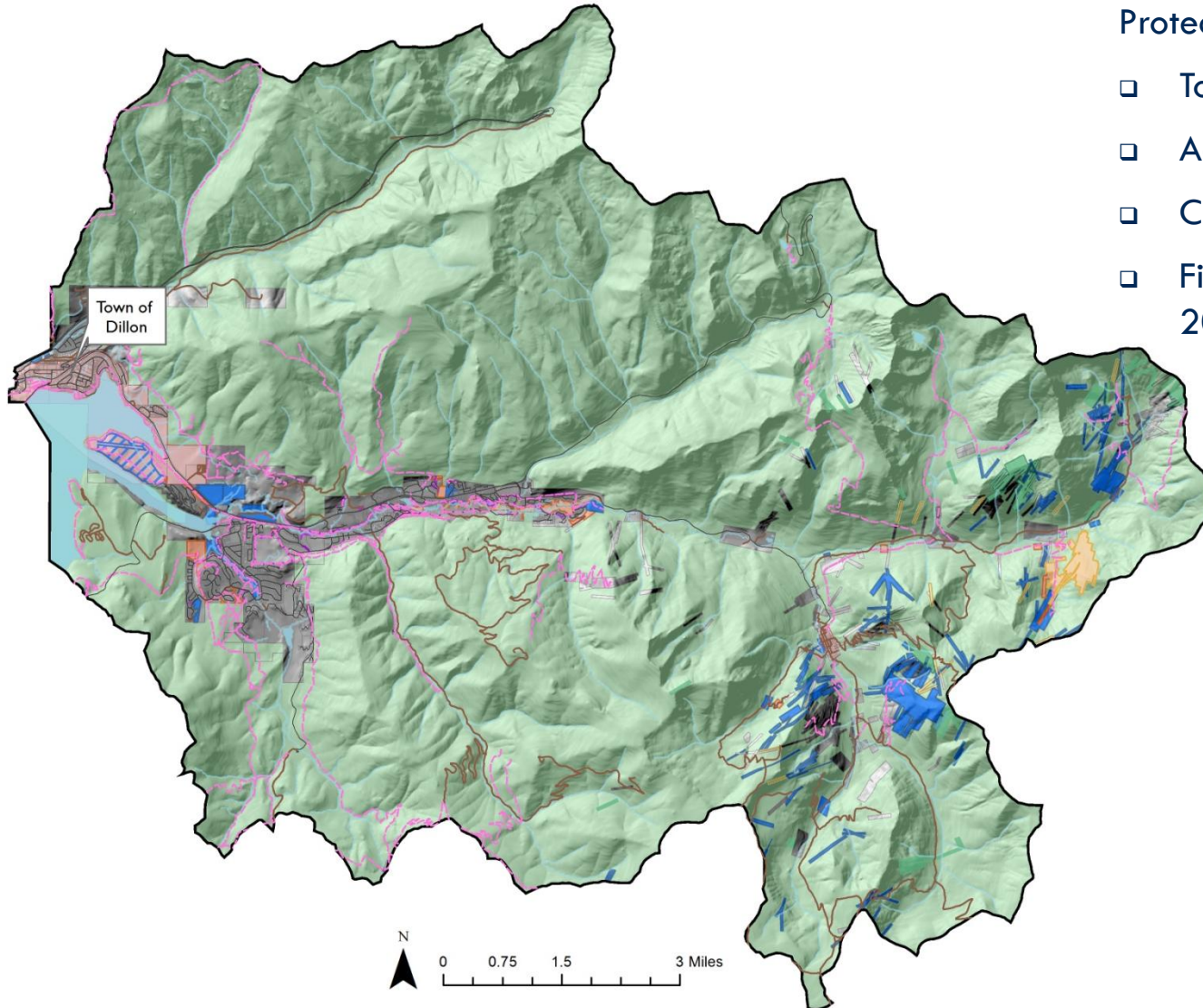


# Snake River Basin Protected Lands



## Protected Since 1995

- ❑ Total Acres = 1,571.73 ac
- ❑ Acquisition Costs = \$4,562,042
- ❑ Cost Per Acre = \$2,902.56
- ❑ Five property acquisitions in 2016 totaling 63.92 acres

## Legend

- Summit Co Open Space
- Partial interest/Restrictive Covenant
- Conservation Easement
- Trail/Access Easement
- Property Conveyed to USFS
- Open Space Easement/Dedication
- Private Parcels
- White River National Forest