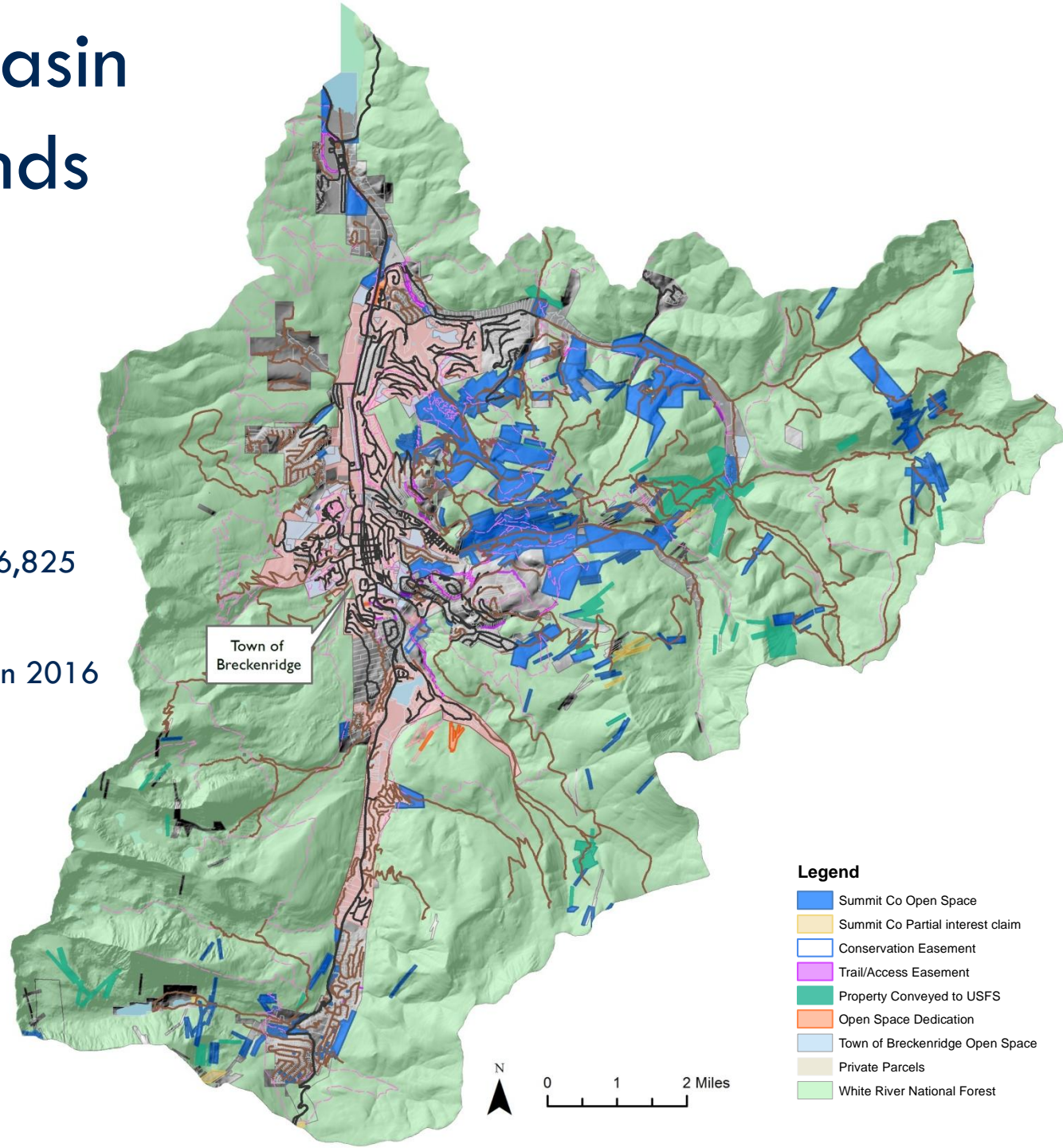


Upper Blue Basin Protected Lands

Protected Since 1995

- ❑ Total Acres = 4,626 acres
- ❑ Acquisition Costs = \$14,006,825
- ❑ Cost Per Acre = \$3,027
- ❑ Nine property acquisitions in 2016 totaling 78.675 acres



Legend

- Summit Co Open Space
- Summit Co Partial interest claim
- Conservation Easement
- Trail/Access Easement
- Property Conveyed to USFS
- Open Space Dedication
- Town of Breckenridge Open Space
- Private Parcels
- White River National Forest